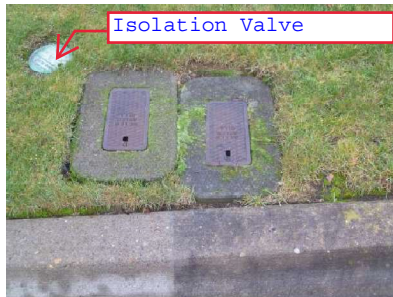


## **Winterizing your Backflow – Reduced Pressure Zone Backflow (RPZ)**

1. Locate the isolation valve on your irrigation system. The valve will be in a 6" Round Valve box at 1 of 2 locations:

- In a 6" Round Valve box close to your house's water meter.



- In a 6" Round Valve Box installed before the RPZ backflow device.

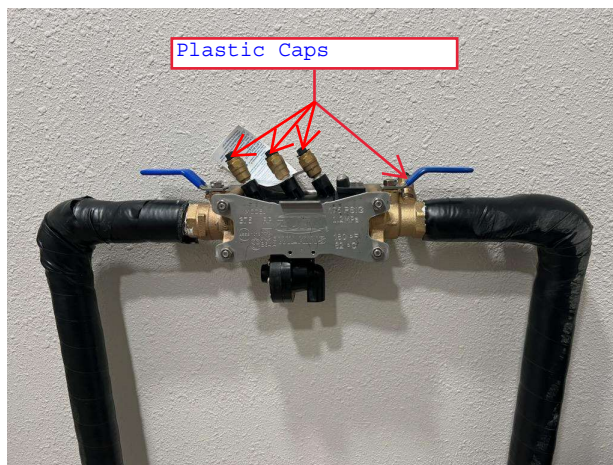


2. Turn off the isolation valve:

- The isolation valve, when off, should be perpendicular to the pipe.

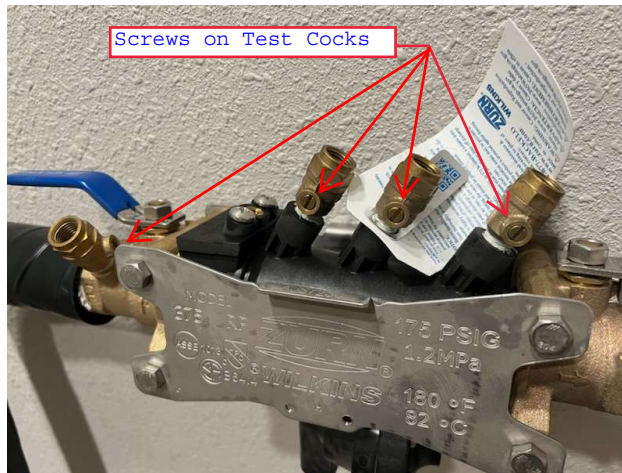


3. Remove (unscrew) the plastic caps from the Test Cock

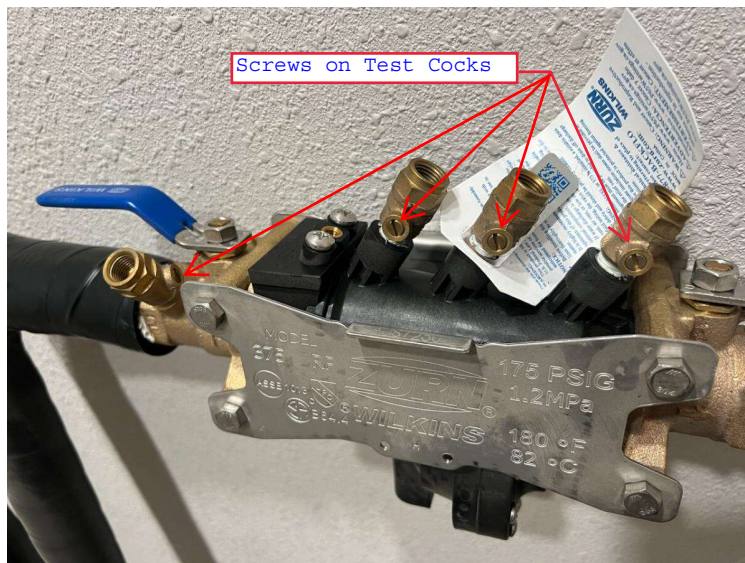


4. Open the bleeder valves (Test Cocks) to a horizontal position:

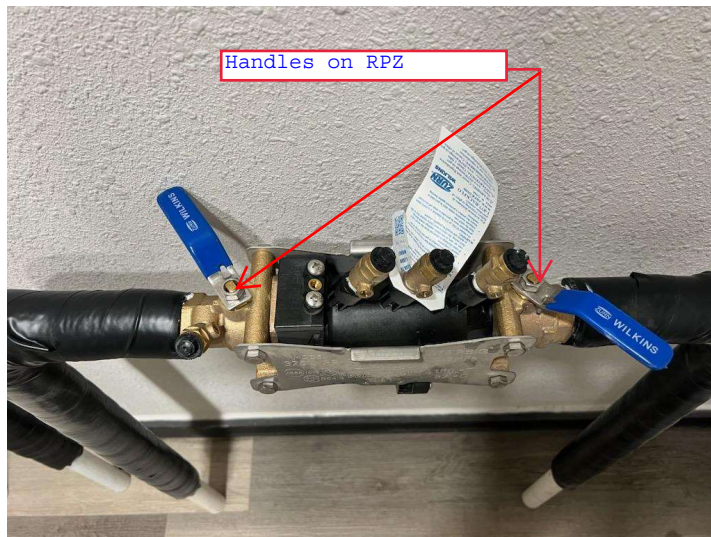
- Working from the shut off valve side of the RPZ, open the screw on each test-cock so that the screw is in line with the test-cock. Water should slowly purge from each test-cock until the water pressure subsides.



5. Once water subsides, turn the screws on each test cock so they are at a 45-degree angle to the direction of the Test cock.



6. Turn Handles on the backflow device to a 45 degree angle and place plastic caps back on each test-cock.



7. Manually cycle the system using your controller.
  - With the controller in the run position, hold down the PRG button until you see a flashing 0:00.





- When a flashing “0:00” is shown, press the “+” button until you see “0:01”.
- Allow the controller to cycle through all valves at a one-minute duration.

*The steps shown in this tutorial are meant to protect most Devices in Typical weather conditions in Texas. However, to fully protect your system, it is recommended that you contact a licensed irrigator in your state to perform a full winterization of your system. The process for full winterization will be similar but will utilize an air compressor to fully purge your system of water.*