

THE VILLA



KINDRED HOMES
An HCP Company

5
BED

3.5
BATH

2
CAR

3,520
SQ FT



ELEVATION A



ELEVATION A MEDIA



ELEVATION B 3-CAR GARAGE



ELEVATION B MEDIA & 3-CAR GARAGE



ELEVATION C MEDIA



ELEVATION C 3-CAR GARAGE

*These renderings are an artist's interpretation, actual colors and selections may vary.
Some elements shown in renderings display optional upgrades.



Images are artist renderings and will differ from the actual home built. Prices, plans, features, and options are subject to change without notice. Options shown in the renderings and floor plans may be available for an additional expense. Plans are subject to availability and feasibility. Please see a sales representative for more information.

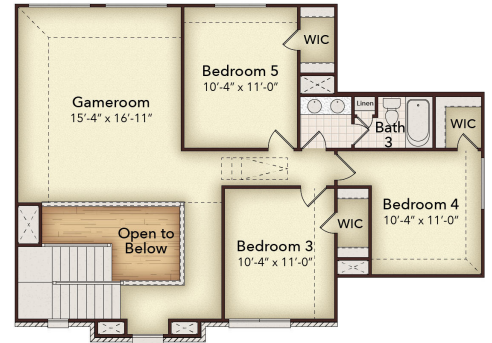
01/22/2024

THE VILLA

5 BED **3.5** BATH **2** CAR **3,520** SQ FT



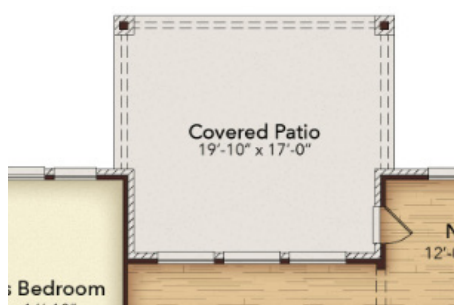
Interactive Floor Plan & Exteriors



OPTIONAL UPGRADES



Opt. 3rd Car Garage



Opt. Covered Patio Extension 2



Opt. Fireplace



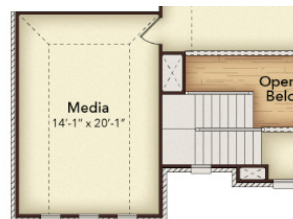
Opt. 12' Glass Door System



Opt. Covered Patio Extension 2 With Fireplace



Opt. Covered Patio Extension 1



Opt. Media Room