

HANNAH HEIGHTS


KINDRED HOMES
An HCP Company



\$393,990

MOVE-IN READY!

The Philips

2,493 Square Feet

4 Bedrooms, 3.5 Bathrooms

2-Car Garage

CONTACT:

Marcela Canales
MCanales@kindredhomes.com
(210) 883-8243

Open Concept

Study

Breakfast Nook

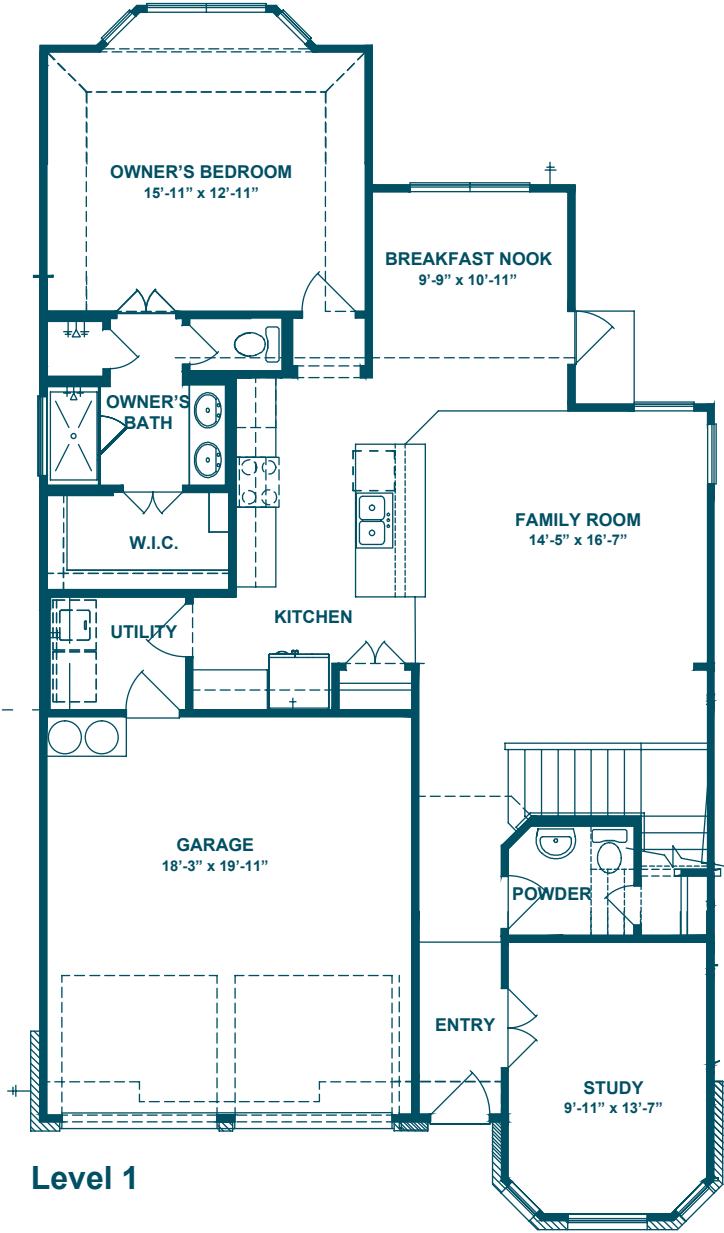
Game Room

313 Jean St
Seguin, TX 78155

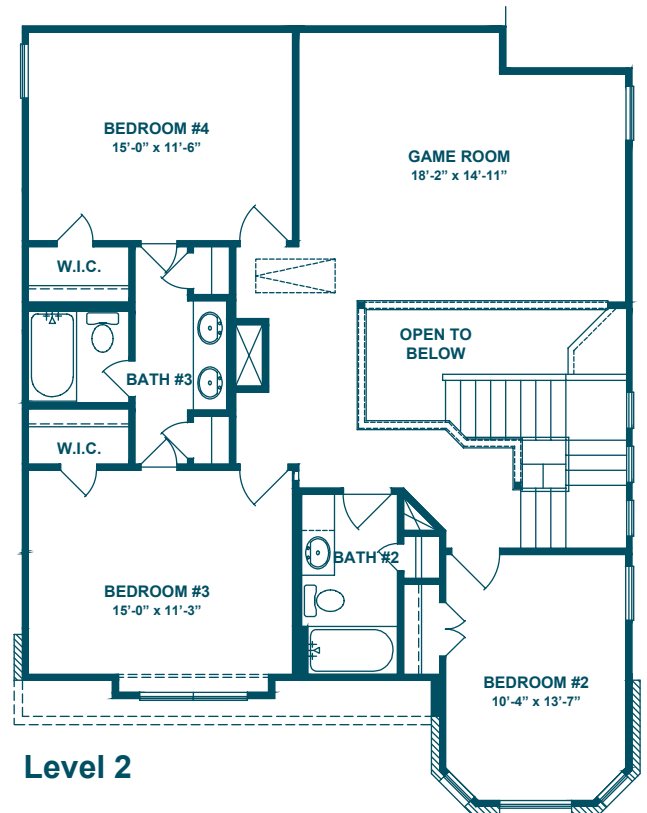


Prices, plans, specifications, square footage, availability are subject to change without notice or prior obligations. Square footage is approximate and may vary by elevation and options selected. Options and upgrades may require an additional expense. See the Sales Counselor for specific information and details for these homes. Horton Capital Properties, LLC is an equal opportunity home builder. We do business in accordance with the Federal Fair Housing Law. v.1 Rev. 10/19

HANNAH HEIGHTS



Level 1



Level 2